

## Series CC02-SL



AVENTICS™ Series CC02-SL



# Check-choke valve, stainless steel, Series CC02-SL

- suitable for use in food processing
- $Q_n 2 \rightarrow 1 = 50-1000 \text{ l/min}$
- direction of throttle  $2 \rightarrow 1$
- exhaust air throttling
- push-in fitting / External thread
- Heat resistant

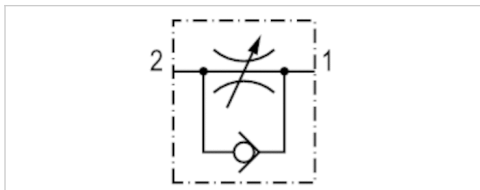


## Certificates

Working pressure min./max.  
Ambient temperature min./max.  
Medium temperature min./max.  
Medium

NSF/ANSI 169, FDA conform, EU  
Regulation 1935/2004

0.5 ... 10 bar  
0 ... 150 °C  
0 ... 150 °C  
Compressed air



## Technical data

Part No.	Port 1	Port 2	Flow	Delivery unit	Fig.
			$Q_n 2 \rightarrow 1$		
R412024736	Ø 4	M5	50 l/min	1 piece	Fig. 1
R412024737	Ø 4	G 1/8	150 l/min	1 piece	Fig. 2
R412024738	Ø 6	G 1/8	190 l/min	1 piece	Fig. 3
R412024739	Ø 8	G 1/8	200 l/min	1 piece	Fig. 4
R412024740	Ø 6	G 1/4	370 l/min	1 piece	Fig. 5
R412024741	Ø 8	G 1/4	420 l/min	1 piece	Fig. 6
R412024742	Ø 10	G 3/8	1000 l/min	1 piece	Fig. 7

Nominal flow  $Q_n$  at 6 bar and  $\Delta p = 1 \text{ bar}$

## Technical information

Materials according to AISI/FDA:

Housing ▶ Stainless steel AISI 316L (1.4404)

Flow control screw ▶ Stainless steel AISI 316L (1.4404)

Seal ▶ FKM (FDA-compliant)

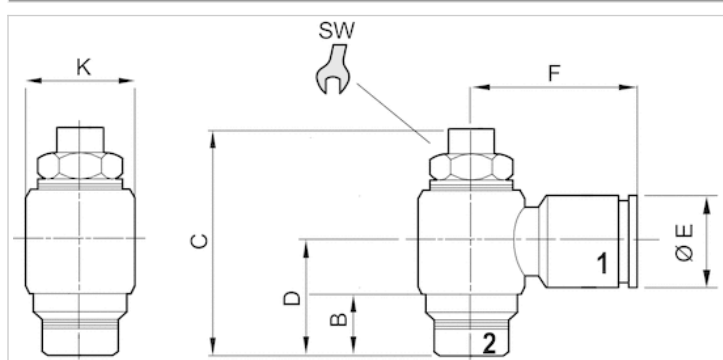
Stainless steel connection ▶ AISI 316L (1.4404)

## Technical information

Material	
Housing	Stainless steel
Flow control screw	Stainless steel
Seals	Fluorocaoutchouc

## Dimensions

### Dimensions

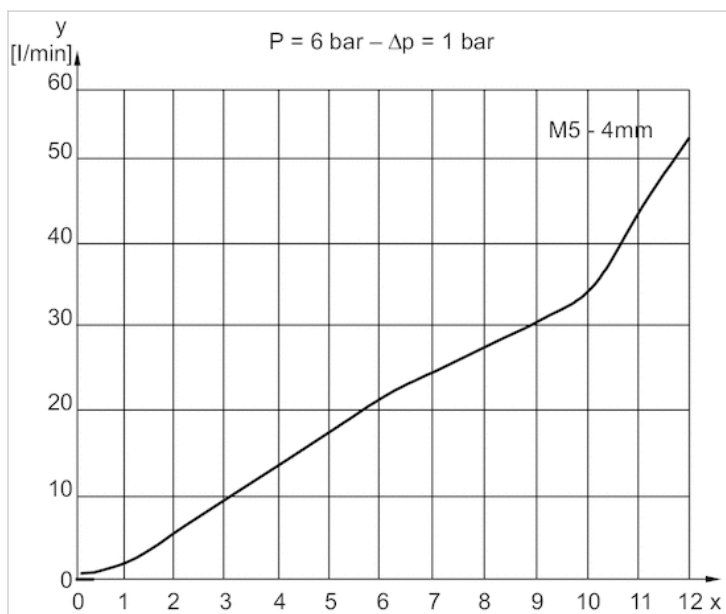


### Dimensions

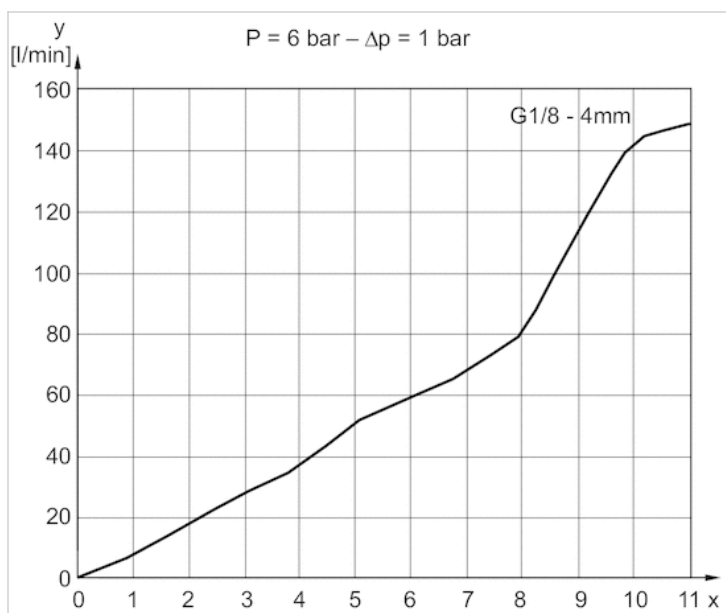
Part No.	Port 1	Port 2	B	C	D	ØE	F	ØK	SW
R412024736	Ø 4	M5	5	28.5	12.5	9	18	10	6
R412024737	Ø 4	G 1/8	5	32	15.5	9	19.5	14	9
R412024738	Ø 6	G 1/8	5	32	15.5	12	22	14	9
R412024739	Ø 8	G 1/8	5	32	15.5	14	22.5	14	9
R412024740	Ø 6	G 1/4	6.5	40	17.5	12	23.5	17	10
R412024741	Ø 8	G 1/4	6.5	40	17.5	14	24	17	10
R412024742	Ø 10	G 3/8	9	52	22	16	28	22	14

## Diagrams

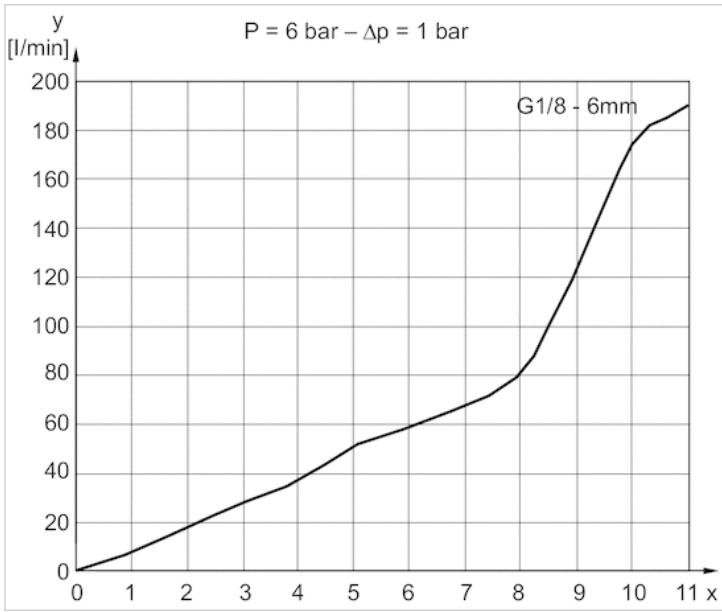
Flow diagram, Fig. 1



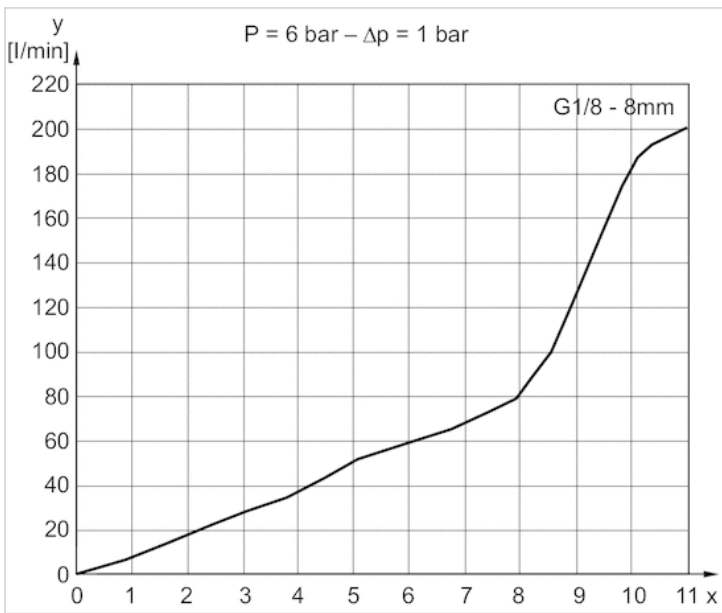
Flow diagram, Fig. 2



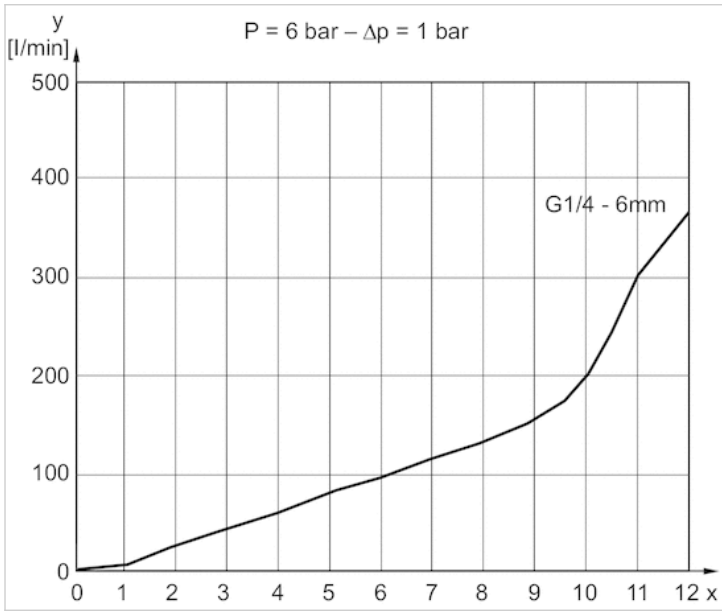
Flow diagram, Fig. 3



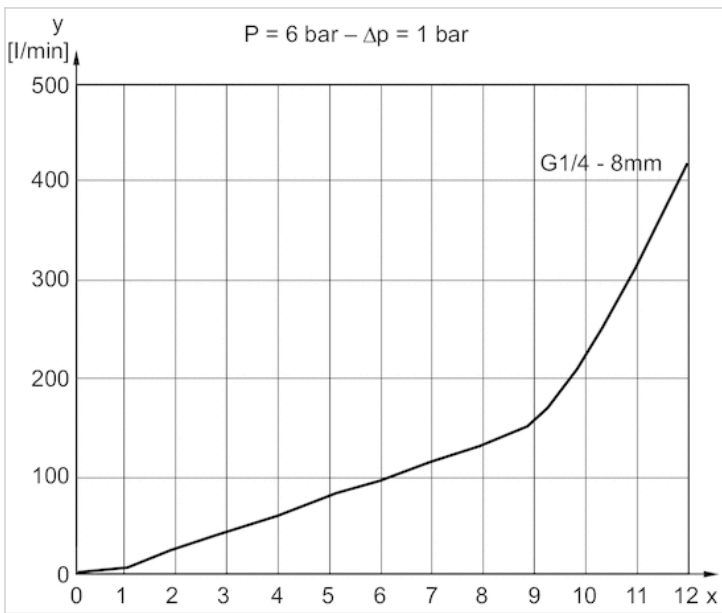
Flow diagram, Fig. 4



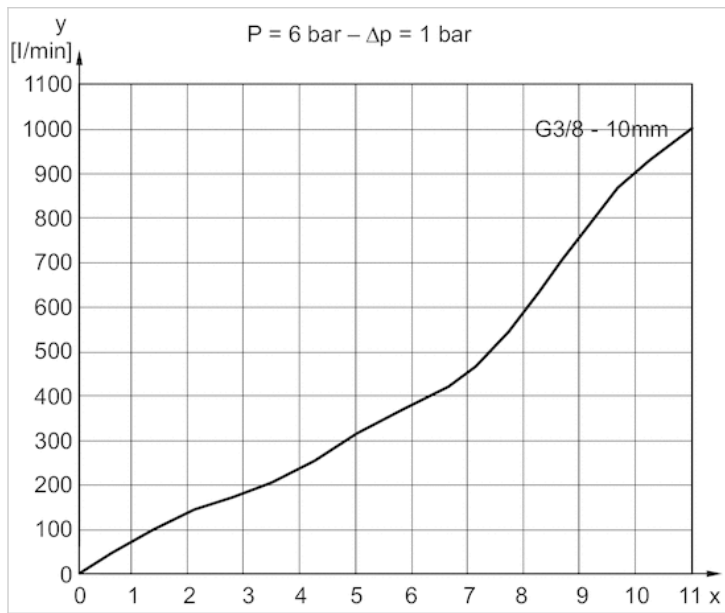
Flow diagram, Fig. 5



Flow diagram, Fig. 6



Flow diagram, Fig. 7



# Check-choke valve, stainless steel, Series CC02-SL

- $Q_n 1 \rightarrow 2 = 150-1000 \text{ l/min}$
- direction of throttle  $1 \rightarrow 2$
- inlet-side throttling
- push-in fitting / External thread
- Heat resistant



Working pressure min./max.

0.5 ... 10 bar

Ambient temperature min./max.

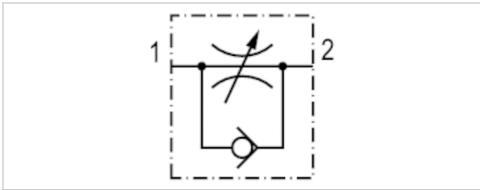
0 ... 150 °C

Medium temperature min./max.

0 ... 150 °C

Medium

Compressed air



## Technical data

Part No.	Port 1	Port 2	Flow	Delivery unit	Fig.
			$Q_n 1 \rightarrow 2$		
R412024749	Ø 4	G 1/8	150 l/min	1 piece	Fig. 1
R412024750	Ø 6	G 1/8	190 l/min	1 piece	Fig. 2
R412024751	Ø 6	G 1/4	370 l/min	1 piece	Fig. 3
R412024752	Ø 8	G 1/4	420 l/min	1 piece	Fig. 4
R412024753	Ø 10	G 3/8	1000 l/min	1 piece	Fig. 5

Nominal flow  $Q_n$  at 6 bar and  $\Delta p = 1 \text{ bar}$

## Technical information

Materials according to AISI/FDA:

Housing ▶ Stainless steel AISI 316L (1.4404)

Flow control screw ▶ Stainless steel AISI 316L (1.4404)

Seal ▶ FKM (FDA-compliant)

Stainless steel connection ▶ AISI 316L (1.4404)

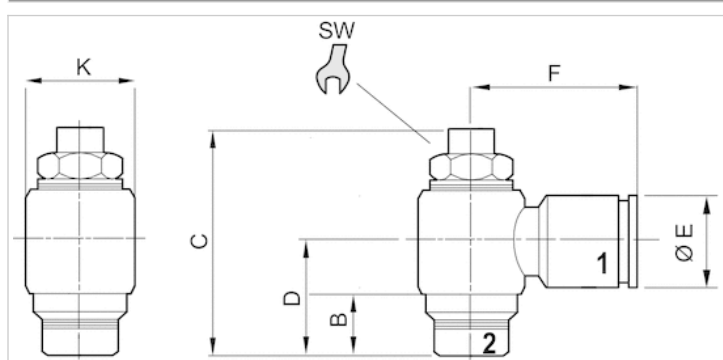


## Technical information

Material	
Housing	Stainless steel
Flow control screw	Stainless steel
Seals	Fluorocaoutchouc

## Dimensions

### Dimensions

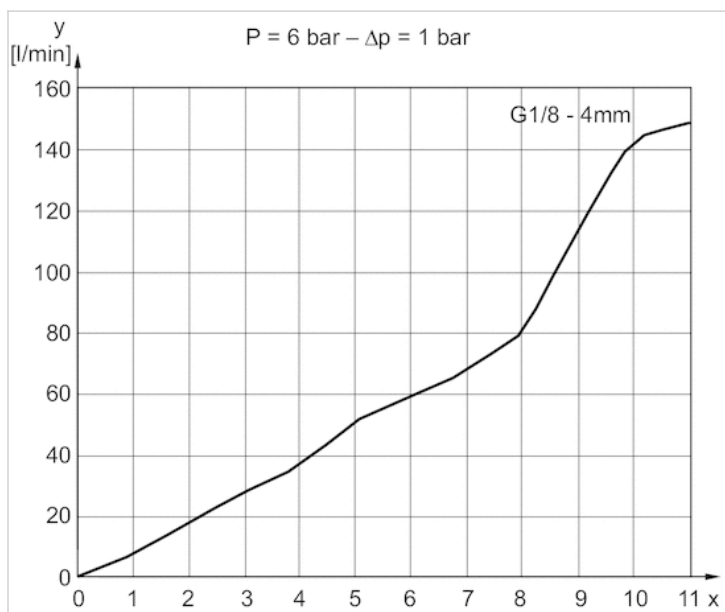


### Dimensions

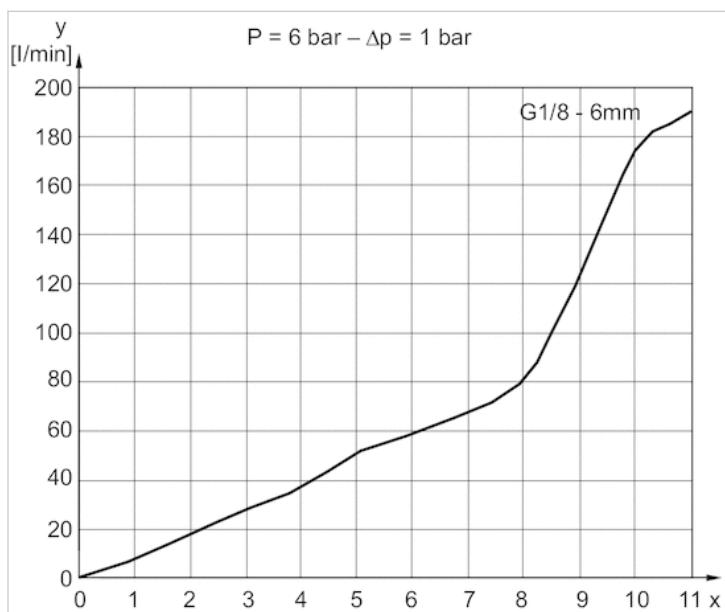
Part No.	Port 1	Port 2	B	C	D	ØE	F	ØK	SW
R412024749	Ø 4	G 1/8	5	32	15.5	9	19.5	14	9
R412024750	Ø 6	G 1/8	5	32	15.5	12	22	14	9
R412024751	Ø 6	G 1/4	6.5	40	17.5	12	23.5	17	10
R412024752	Ø 8	G 1/4	6.5	40	17.5	14	24	17	10
R412024753	Ø 10	G 3/8	9	52	22	16	28	22	14

## Diagrams

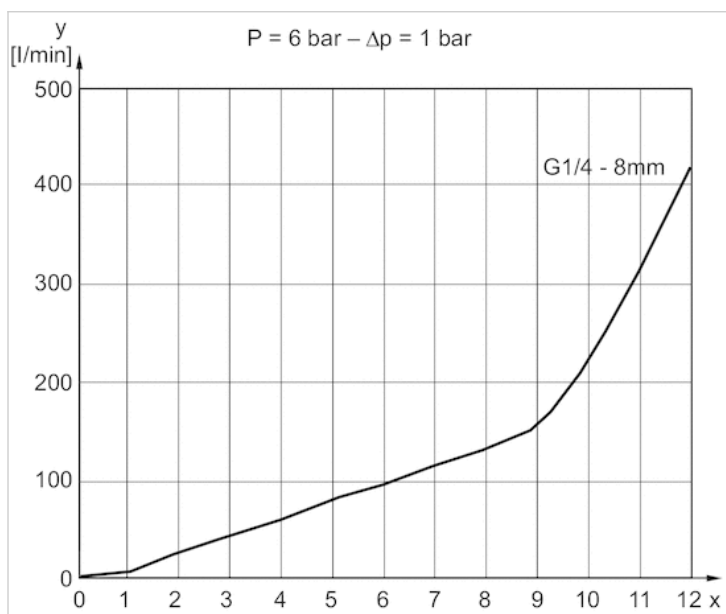
Flow diagram, Fig. 1



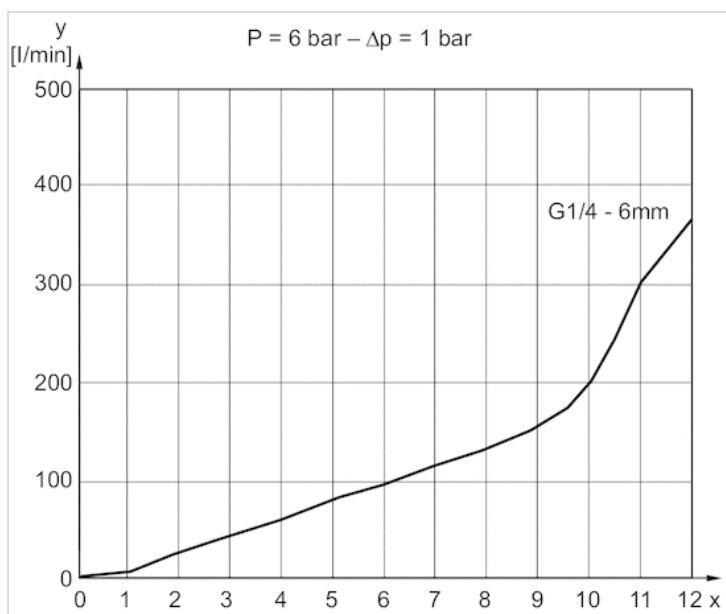
Flow diagram, Fig. 3



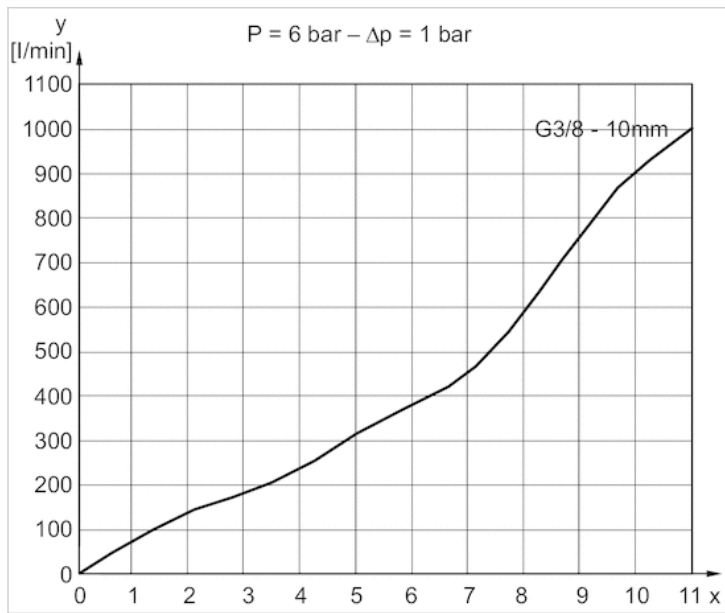
Flow diagram, Fig. 4



Flow diagram, Fig. 5



## Flow diagram, Fig. 5



# Check-choke valve, stainless steel, Series CC02-SL

- $Q_n 2 \rightarrow 1 = 350-600 \text{ l/min}$
- direction of throttle  $2 \rightarrow 1$
- exhaust air throttling
- External thread



Working pressure min./max.

Ambient temperature min./max.

Medium temperature min./max.

Medium

Weight

0.5 ... 10 bar

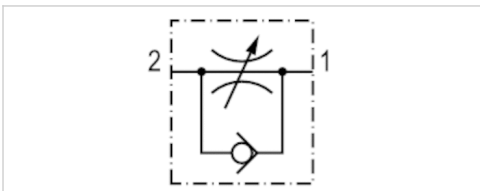
-20 ... 150 °C

-20 ... 200 °C

Compressed air

See table below

The delivered product varies from that in the illustration. See the drawing for an exact description.



## Technical data

Part No.	Port 2	Throttle bore	Flow	Weight
		Ø	$Q_n 2 \rightarrow 1$	
R412004980	G 1/8	3 mm	350 l/min	0.018 kg
R412004981	G 1/4	4.5 mm	600 l/min	0.033 kg

Nominal flow  $Q_n$  at 6 bar and  $\Delta p = 1 \text{ bar}$

Delivery contents: Metal ring and sealing ring are enclosed separately

## Technical information

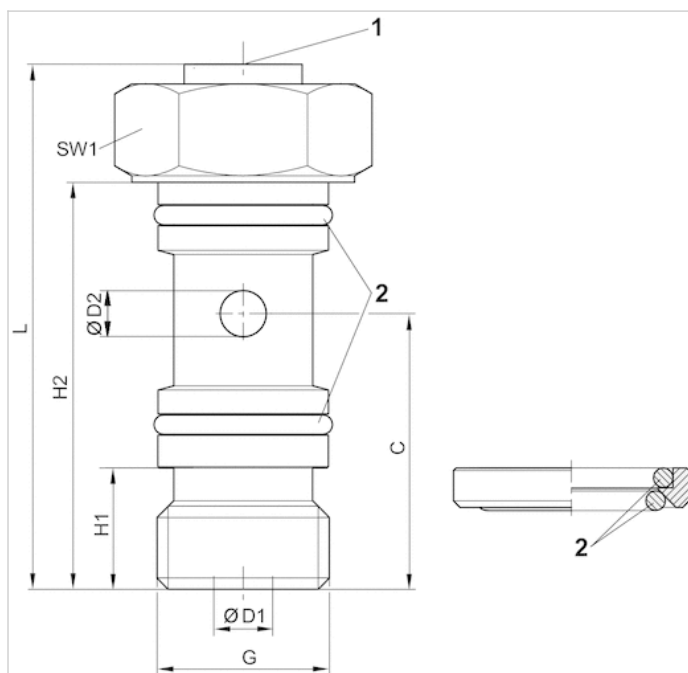
Only applicable in combination with banjo union (see accessories)

## Technical information

Material	
Housing	Stainless steel
Flow control screw	Stainless steel
Seals	Fluorocaoutchouc

## Dimensions

### Dimensions



- 1) Slot in throttle screw 1 mm
- 2) Sealing ring

## Dimensions

Part No.	G	Ø D1	Ø D2	H1	H2	L 1)	C	SW1
R412004980	G 1/8	3	3	7.8	25	32	17.5	14
R412004981	G 1/4	4.5	3.5	9.25	31	40	21	17

- 1) Max.

# Check-choke valve, stainless steel, Series CC02-SL

- $Q_n 1 \rightarrow 2 = 350-600 \text{ l/min}$
- direction of throttle  $1 \rightarrow 2$
- inlet-side throttling
- External thread



Working pressure min./max.

Ambient temperature min./max.

Medium temperature min./max.

Medium

Weight

0.5 ... 10 bar

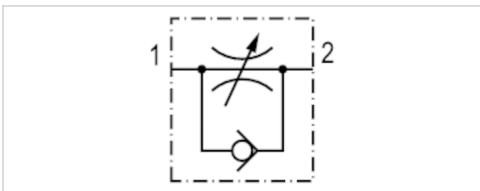
-20 ... 150 °C

-20 ... 200 °C

Compressed air

See table below

The delivered product varies from that in the illustration. See the drawing for an exact description.



## Technical data

Part No.	Port 2	Throttle bore	Flow	Weight
		Ø	$Q_n 1 \rightarrow 2$	
R412010456	G 1/8	3 mm	350 l/min	0.018 kg
R412010457	G 1/4	3.5 mm	600 l/min	0.033 kg

Nominal flow  $Q_n$  at 6 bar and  $\Delta p = 1 \text{ bar}$

Delivery contents: Metal ring and sealing ring are enclosed separately

## Technical information

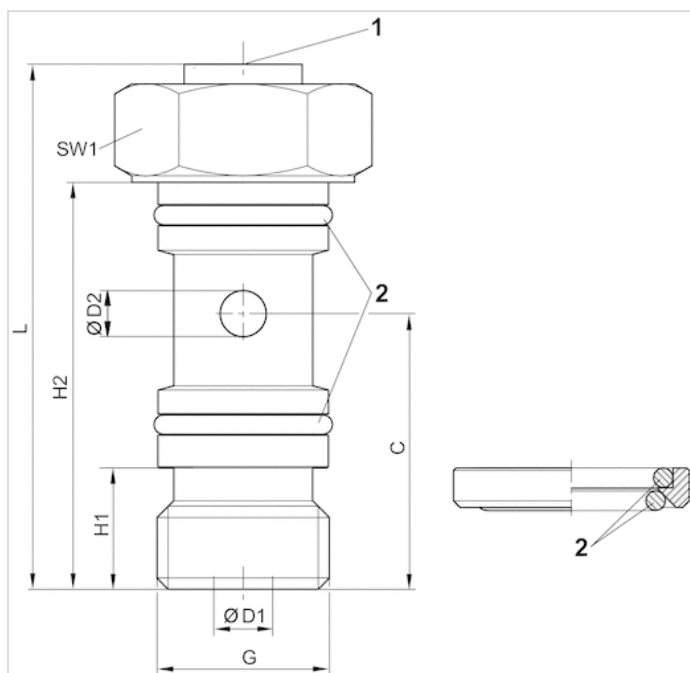
Only applicable in combination with banjo union (see accessories)

## Technical information

Material	
Housing	Stainless steel
Flow control screw	Stainless steel
Seals	Fluorocaoutchouc

## Dimensions

### Dimensions



- 1) Slot in throttle screw 1 mm
- 2) Sealing ring

## Dimensions

Part No.	G	$\varnothing D1$	$\varnothing D2$	H1	H2	L 1)	C	SW1
R412010456	G 1/8	3	3	6	25	32	17.5	14
R412010457	G 1/4	3.5	3.5	9.25	31	40	21	17

- 1) Max.



## Series QR2-C-RV1, stainless steel

- 1x banjo union
- G 1/8 G 1/4
- push-in fitting
- Ø 4 Ø 6 Ø 8
- QR2-C-RV1
- suitable for use in food processing



Working pressure min./max.	-0.95 ... 16 bar
Ambient temperature min./max.	-20 ... 150 °C
Weight per piece	See table below

### Technical data

Part No.	Port G	Port D	Delivery unit	Weight per piece
R412004973	G 1/8	Ø 4	2 piece	0.013 kg
R412004974	G 1/8	Ø 6	2 piece	0.016 kg
R412004975	G 1/8	Ø 8	2 piece	0.017 kg
R412004976	G 1/4	Ø 6	2 piece	0.019 kg
R412004977	G 1/4	Ø 8	2 piece	0.02 kg

### Technical information

The series QR1 (plastic) and QR2 (metal) can not be combined

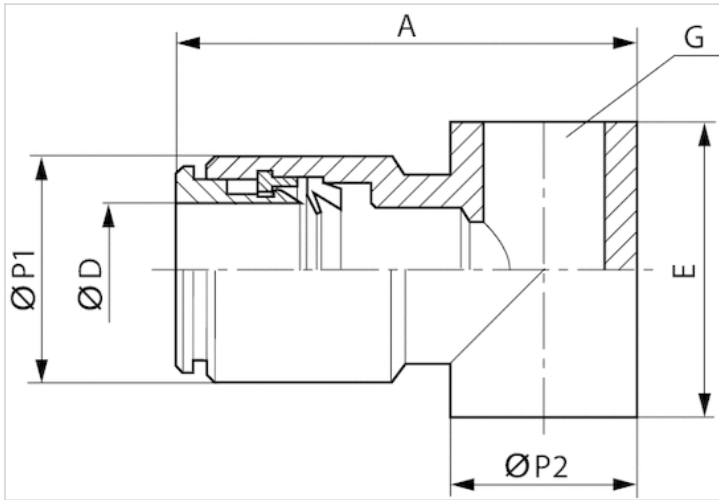
For further information about assembling and tolerances of adaptable tubing can be found in the "Technical information" document (available in the MediaCentre).

### Technical information

Material	
Housing	Stainless steel
Seal	Fluorocaoutchouc
Tooth lock washer	Stainless steel
Release ring	Stainless steel

## Dimensions

### Dimensions



## Dimensions

Part No.	Port D	Port G	A	E	Ø P1	Ø P2
R412004973	Ø 4	G 1/8	27	15	9	14
R412004974	Ø 6	G 1/8	29	15	12	14
R412004975	Ø 8	G 1/8	29.5	15	14	14
R412004976	Ø 6	G 1/4	32.5	17	12	18
R412004977	Ø 8	G 1/4	33	17	14	18

# Efficient pneumatic solutions, our program: cylinders and drives, valves and valve systems, air supply management



Visit us: [Emerson.com/Aventics](http://Emerson.com/Aventics)

Your local contact: [Emerson.com/contactus](http://Emerson.com/contactus)



Emerson.com



[Facebook.com/EmersonAutomationSolutions](https://www.facebook.com/EmersonAutomationSolutions)



[LinkedIn.com/company/Emerson-Automation-Solutions](https://www.linkedin.com/company/Emerson-Automation-Solutions)



[Twitter.com/EMR\\_Automation](https://twitter.com/EMR_Automation)

An example configuration is depicted on the title page. The delivered product may thus vary from that in the illustration. Subject to change. This Document, as well as the data, specifications and other information set forth in it, are the exclusive property of AVENTICS GmbH. It may not be reproduced or given to third parties without its consent. Only use the AVENTICS products shown in industrial applications. Read the product documentation completely and carefully before using the product. Observe the applicable regulations and laws of the respective country. When integrating the product into applications, note the system manufacturer's specifications for safe use of the product. The data specified only serve to describe the product. No statements concerning a certain condition or suitability for a certain application can be derived from our information. The information given does not release the user from the obligation of own judgment and verification. It must be remembered that the products are subject to a natural process of wear and aging.

The Emerson logo is a trademark and service mark of Emerson Electric Co. Brand logotype are registered trademarks of one of the Emerson family of companies. All other marks are the property of their respective owners. © 2017 Emerson Electric Co. All rights reserved.  
2019-03



## CONSIDER IT SOLVED™