

Features

- Mount directly to actuators with NAMUR, Keystone, or Worcester interfaces
- Easy conversion from AC to DC by simply changing coil
- Standard momentary/maintained manual operator
- 3/2 is normally closed poppet design for spring return actuators
- 3/2 normally closed or 4/2 operation can be selected by rotating sub-base gasket
- 3/2 normally closed or 4/2 valves have built-in linear flow device capable of controlling Cv from 0.10 to 0.50
- Breather block exhausts to spring side of actuator to prevent corrosion of the actuator
- Unique CA slide and ceramic flow plate for extra-long life

Construction

| Valve Parts in Contact with Fluids | |
|------------------------------------|----------------------------|
| Core Tube | 305 Stainless Steel |
| Core and Plugnut | 430F Stainless Steel |
| Springs | 302 Stainless Steel |
| Seals | Low-Friction, Low-Wear NBR |
| Interface Plate | Molded PA |
| 8401 Series Only | |
| Pressure Port | 303 Stainless Steel |
| Main and Pilot Body | Molded PA |
| Spool | CA |
| Slide | Graphite-filled PTFE |
| Flow Plate | Ceramic (Alumina) |
| Worcester Version | |
| Main Body and Sub-Base | Anodized Aluminum |

Electrical

| Standard Coil and Class of Insulation | Watt Rating and Power Consumption | | | | Spare Coil Part Number | |
|---------------------------------------|-----------------------------------|-------|------------|-----------|------------------------|--------|
| | DC Watts | Watts | AC | | AC | AC |
| | | | VA Holding | VA Inrush | | |
| F | 6.9 | 6.3 | 8.8 | 12.1 | 266763 | 270008 |

Standard Voltages: 24, 120, 240 volts AC, 60 Hz (or 110, 220 volts AC, 50 Hz).
 6, 12, 24, 120, 240 volts DC. Must be specified when ordering.
 Other voltages available upon request.

Solenoid Enclosures

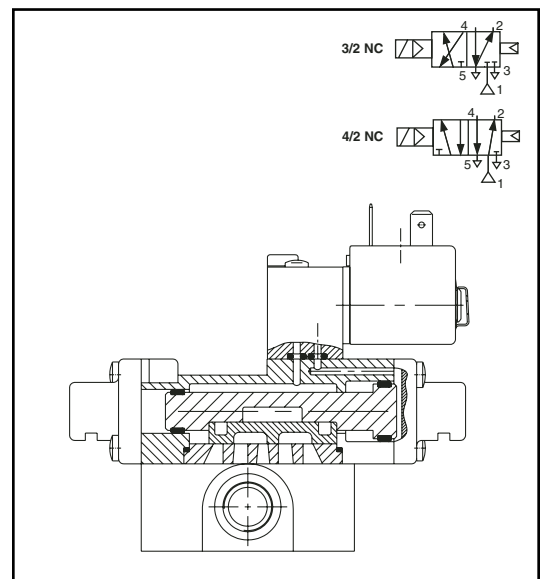
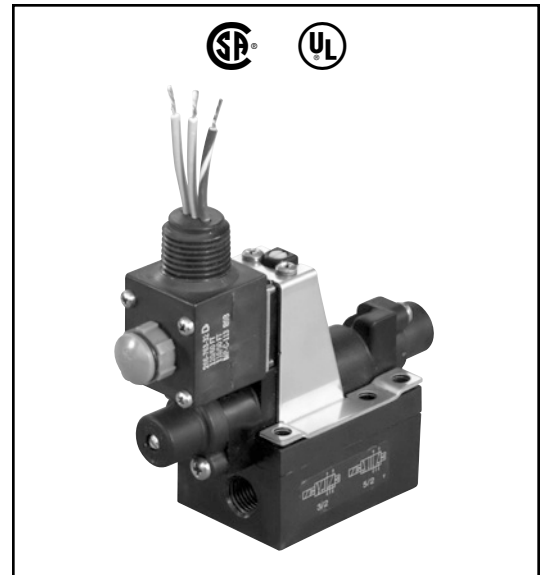
Standard: Watertight, Types 1, 2, 3, 3S, 4, and 4X.

Optional: Explosionproof and Watertight, Types 3, 3S, 4, 4X, 6, 6P, 7, and 9. (To order, change "WT" catalog number prefix to "EF".)

Molded epoxy coil per 3 x DIN 46244. (To order, change "WT" catalog number prefix to "SC".)

Molded epoxy open frame Class F coil with 18" leads. (To order, change "WT" catalog number prefix to "U".)

See *Optional Features Section* for other available options.



VALVE
AUTOMATION

Nominal Ambient Temp. Ranges

AC: 0°F to 104°F (-18°C to 40°C),
 except prefixes "U" and "SC" to 135°F (57°C)
 DC: 0°F to 77°F (-18°C to 25°C)

Approvals

"WT" - UL recognized component General Purpose Valve, CSA certified.

"EF" - UL listed solenoid, CSA certified.

"U" and "SC" - UL recognized component, CSA certified.

Refer to *Engineering Section* for details.

**3/2•5/2
SERIES
8401
Direct
Mount**



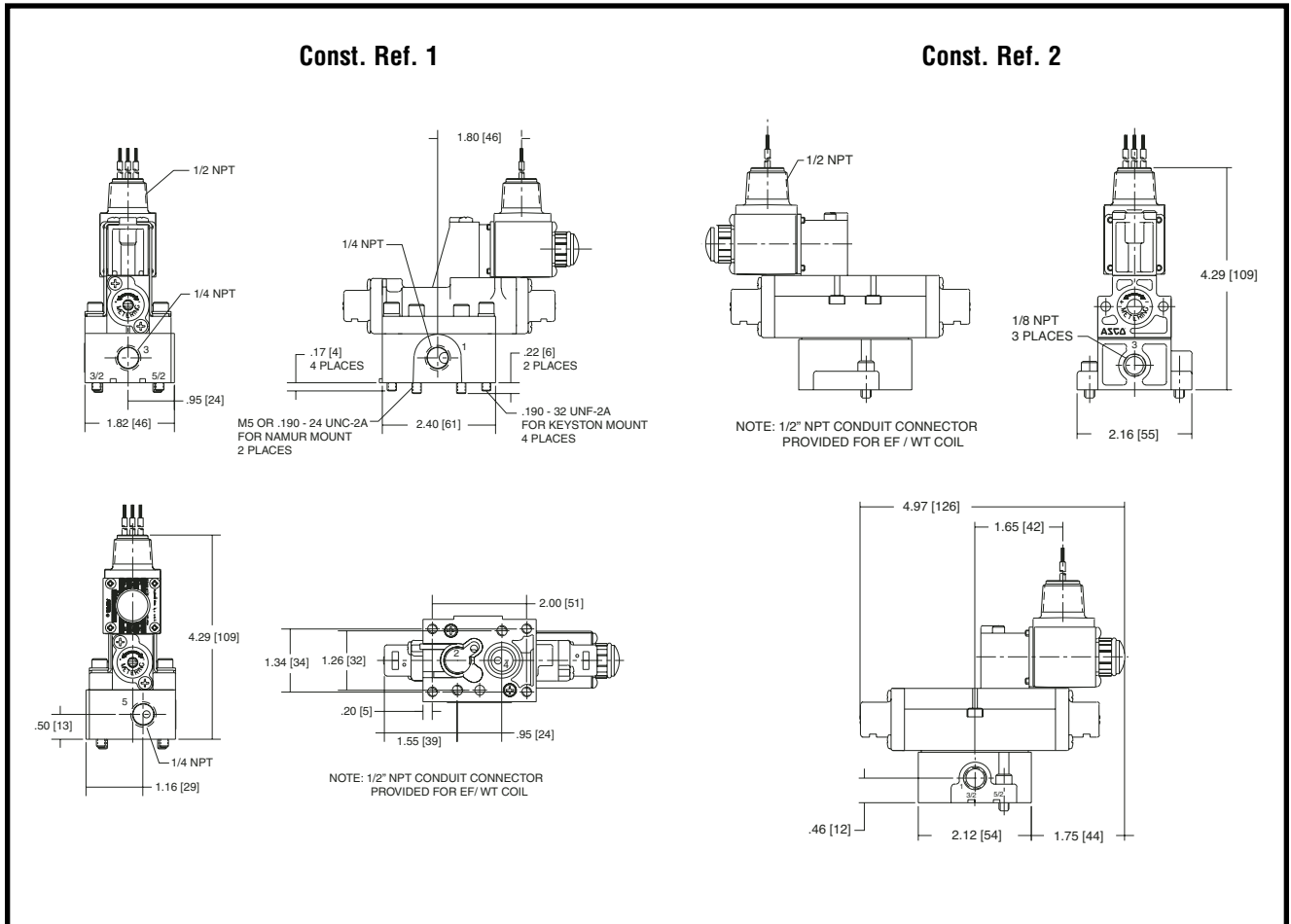
Specifications (English units)

| Pipe Size (in) | Orifice Size (in) | Cv Flow Factor | Main Line Supply Pressure (psi) AC and DC | | | | Catalog Number | Const. Ref. | Interface Type | Watt Rating/ Class of Coil Insulation | |
|---------------------------------------|-------------------|----------------|---|------|---------------------|----|----------------|-------------|----------------|---------------------------------------|-------|
| | | | Air-Inert Gas | | Max. Fluid Temp. °F | | | | | AC | DC |
| | | | Min. | Max. | AC | DC | | | | | |
| 3-WAY NORMALLY CLOSED OR 4-WAY | | | | | | | | | | | |
| 1/4 | 1/4 | .50 | 20 | 150 | 104 | 77 | WT8401B202M | 1 | NAMUR | 6.3/F | 6.9/F |
| 1/4 | 1/4 | .50 | 20 | 150 | 104 | 77 | WT8401B204M | 1 | Keystone | 6.3/F | 6.9/F |
| 1/4 | 1/4 | .40 | 20 | 150 | 104 | 77 | WT8401B200M | 2 | Worcester | 6.3/F | 6.9/F |

Specifications (Metric units)

| Pipe Size (in) | Orifice Size (mm) | Kv Flow Factor (m³/h) | Main Line Supply Pressure (bar) AC and DC | | | | Catalog Number | Const. Ref. | Interface Type | Watt Rating/ Class of Coil Insulation | |
|---------------------------------------|-------------------|-----------------------|---|------|---------------------|----|----------------|-------------|----------------|---------------------------------------|-------|
| | | | Air-Inert Gas | | Max. Fluid Temp. °C | | | | | AC | DC |
| | | | Min. | Max. | AC | DC | | | | | |
| 3-WAY NORMALLY CLOSED OR 4-WAY | | | | | | | | | | | |
| 1/4 | 6 | .43 | 1 | 10 | 40 | 25 | WT8401B202M | 1 | NAMUR | 6.3/F | 6.9/F |
| 1/4 | 6 | .43 | 1 | 10 | 40 | 25 | WT8401B204M | 1 | Keystone | 6.3/F | 6.9/F |
| 1/4 | 6 | .34 | 1 | 10 | 40 | 25 | WT8401B200M | 2 | Worcester | 6.3/F | 6.9/F |

Dimensions inches (mm)



VALVE
AUTOMATION